





THE RITZ-CARLTON

BANGKOK


LOCATION


THE RITZ-CARLTON, BANGKOK

189 Wireless Road, Lumpini, Pathumwan, Bangkok 10330 T +66 2180 7777


 MRT Lumpini Station exit 1  Shuttle bus services at BTS Phloen Chit Station every 30 minutes


DON MUEANG INTERNATIONAL AIRPORT

 Take the Red Line SRTET from Don Mueang Station to Bang Sue Grand Station. Change to the MRT Blue Line at Bang Sue Station and alight at Lumpini Station (Exit 1).

 Enter Highway 31 and take the exit ramp. Continue via the elevated road and Chalerm Maha Nakhon Expressway towards Chuea Phloeng Road. Exit at 1-03 toward Rama IV road. Stay in the right lane to continue onto Rama IV road. The Ritz-Carlton, Bangkok will be on you right.

SUARNABHUMI AIRPORT

 Take the Airport Link from Suvarnabhumi Airport Station to Makkasan Station. Change to the MRT Blue Line at Petchaburi Station and alight at Lumpini Station (Exit 1)

 Take the Si Rat Expressway and exit at 1-03 toward Rama IV road. Stay in the right lane to continue onto Rama IV road. The Ritz-Carlton, Bangkok will be on you right.

QUEEN SIRIKIT NATIONAL CENTER

Travel directly two stations from the MRT Blue Line Lumpini Station to Queen Sirikit National Center Station.



THE RITZ-CARLTON
BANGKOK

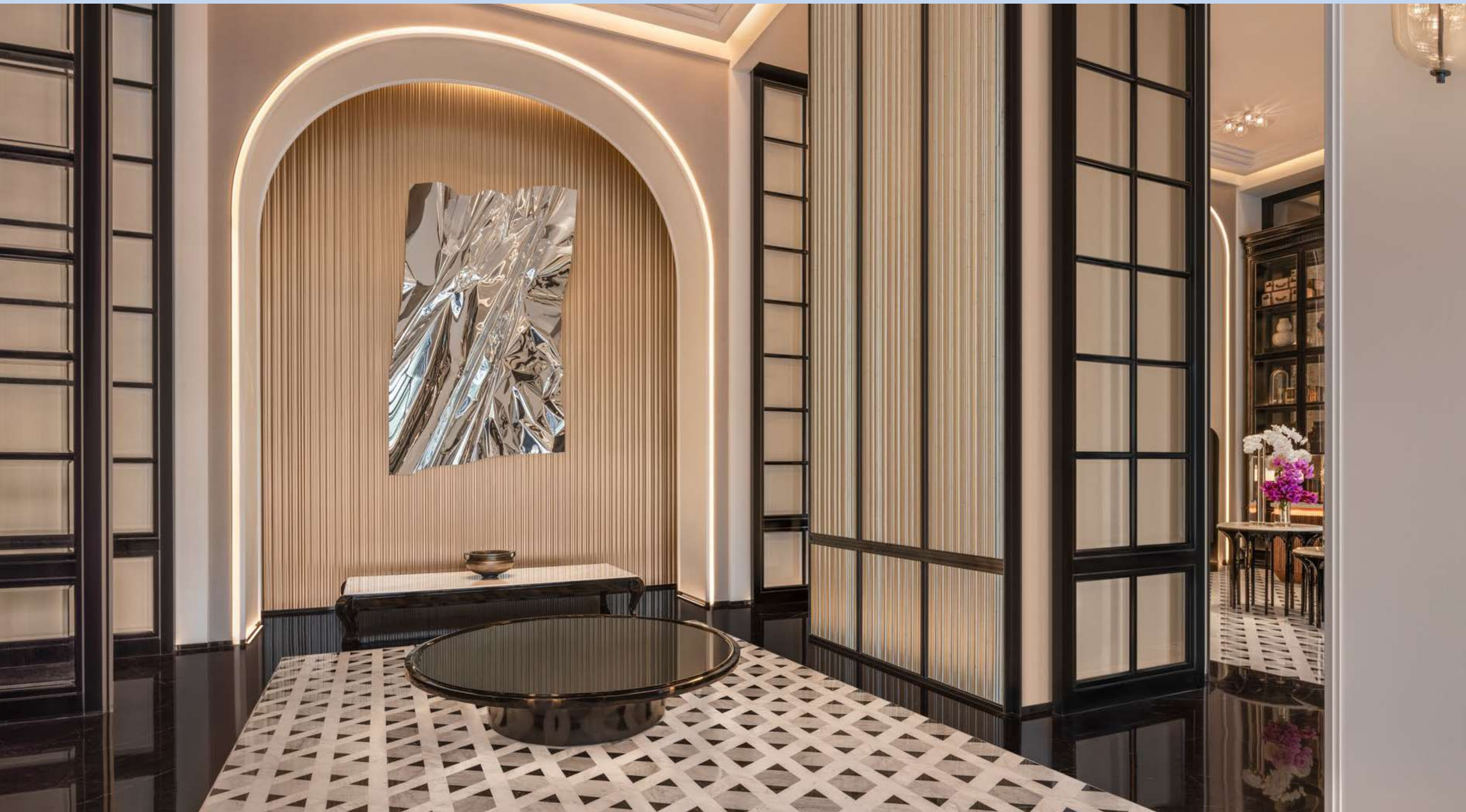
THE RITZ-CARLTON, BANGKOK

23 RD FLOOR	Club Lounge
8 TH – 24 TH FLOOR	Guestrooms
L FLOOR	Lobby, Caleō, Swimming Pool, The Ritz-Carlton Spa
7 TH FLOOR	Duet by David Toutain, Lily’s, Fitness Center, Ritz Kids
4 TH FLOOR	Meetings and Events
G FLOOR	Arrival Hall



THE RITZ-CARLTON
BANGKOK

ARRIVAL HALL



THE RITZ-CARLTON
BANGKOK

ENTRANCE FOYER



THE RITZ-CARLTON
BANGKOK

ENTRANCE FOYER



THE RITZ-CARLTON
BANGKOK

MEETINGS AND EVENTS

MEETING ROOMS AREAS

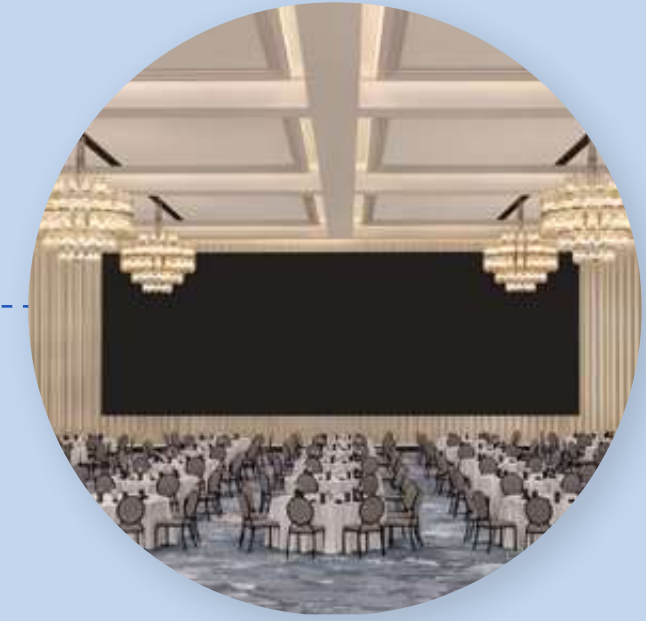
FLOOR	VENUE	AREA (Sq.m)	WIDTH (m)	LENGTH (m)	HEIGHT (m)
4	The Ritz-Carlton Grand Ballroom	1,355.6	21.7	60.4	7.5
4	The Ritz-Carlton Ballroom 1	633.3	21.7	28.2	7.5
4	The Ritz-Carlton Ballroom 2	722.3	21.7	32.2	7.5
4	Pre-Function	78.3	9.7	8.1	6
4	Pre-Function 3	438.3	12.4	36.8	6
4	Pre-Function 4	210.0	6	36	4.3
4	Living Room	58.6	6.4	9.9	5.6
4	Gallery 1	123.1	10.6	11.6	4.3
4	Gallery 2	42.3	4.9	9	4.3
4	Gallery 3	42.3	4.9	9	4.3
4	Gallery 4	42.3	4.9	9	4.3
4	Gallery 5	32.5	4.9	7	4.3
4	Ballroom Lounge	50.7	5.5	9.8	3
4	Gallery Lounge	51.2	7.2	7.9	4
4	Lift Lobby/Pre-Function	323.7	13.9	24.2	6
4	The Ritz-Carlton Terrace	366.4	5	73.2	-
4	The Ritz-Carlton Terrace 1	273.3	5	51.2	-
4	The Ritz-Carlton Terrace 2	93.1	5	22.0	-
Total		3215.3			

The Ritz-Carlton Ballroom LED Screen Sizes: 15.6 x 5.4 m. (1 main screen) & 6.6 x 3.71 m. (2 screens on side)

THE RITZ-CARLTON
TERRACE
366.4 sq.m.
5 x 73.2 m.



THE RITZ-CARLTON
GRAND BALLROOM
1355.6 sq.m.
21.7 x 60.4 m.



THE RITZ-CARLTON
BALLROOM₁
633.3 sq.m.
21.7 x 28.2 m.

THE RITZ-CARLTON
BALLROOM₂
722.3 sq.m.
21.7 x 32.2 m.

♦ BALLROOM LOUNGE
50.7 sq.m.
5.5 x 9.8 m.

THE RITZ-CARLTON
TERRACE₁
273.3 sq.m.
5 x 51.2 m.



LIFT LOBBY /
PRE-FUNCTION
323.7 sq.m.

LIVING ROOM ♦
58.6 sq.m.
6.4 x 9.9 m.

THE RITZ-CARLTON
TERRACE₂
93.1 sq.m.
5 x 22 m.

PRE-FUNCTION₃
438.3 sq.m.
12.4 x 36.8 m.

RESTROOM

RESTROOM

♦ PRE-FUNCTION
78.3 sq.m.
9.7 x 8.1 m.

♦ GALLERY LOUNGE
51.2 sq.m.
7.2 x 7.9 m.

PRE-FUNCTION₄
210 sq.m.
6 x 36 m.

♦ GALLERY₅
32.5 sq.m.
4.9 x 7 m.

♦ GALLERY₁
123.1 sq.m.
10.6 x 11.6 m.

♦ GALLERY₂
42.3 sq.m.
4.9 x 9 m.

♦ GALLERY₃
42.3 sq.m.
4.9 x 9 m.

♦ GALLERY₄
42.3 sq.m.
4.9 x 9 m.

GALLERY₂₋₅



THE RITZ-CARLTON
BANGKOK

CAPACITY CHART

VENUE	AREA (Sq.m)	DIMENSION WxLxH (m)	RECEPTION	THEATRE	BANQUET	CLASSROOM	CLUSTER	BOARDROOM	U-SHAPE	LED SCREEN SIZE	PROJECTOR SIZE	DIGITAL SIGNAGE SIZE
The Ritz-Carlton Grand Ballroom	1,355.6	21.7x60.4x7.5	2,000	1,800	960	837	672	840	201	(W) 15.60 x (H) 5.40 M. (W) 6.60 x (H) 3.71 M. x 2 screens	250" x 2 screens	32" x 3 screens
The Ritz-Carlton Ballroom 1 (1A +1B)	633.3	21.7x28.2x7.5	950	768	420	396	294	378	93	(W) 6.60 x (H) 3.71 M.	250"	32" x 2 screens
The Ritz-Carlton Ballroom 2 (2A +2B)	722.3	21.7x32.2x7.5	1,050	864	450	432	315	390	111	(W) 15.60 x (H) 5.40 M. (W) 6.60 x (H) 3.71 M.	250"	32" x 1 screen
The Ritz-Carlton Ballroom 1A + 1B + 2A	858.2	21.7x38.2x7.5	1,280	1,040	570	480	399	486	108	(W) 6.60 x (H) 3.71 M.	250" x 2 screens	32" x 2 screens
The Ritz-Carlton Ballroom 1B + 2A + 2B	1,167.1	21.7x52.2x7.5	1,750	1,548	840	729	588	720	177	(W) 15.60 x (H) 5.40 M. (W) 6.60 x (H) 3.71 M. x 2 screens	250" x 2 screens	32" x 2 screens
The Ritz-Carlton Ballroom 1A	188.5	21.7x8.2x7.5	280	180	110	90	77	108	60	-	250"	32" x 1 screen
The Ritz-Carlton Ballroom 1B	444.8	21.7x20x7.5	670	594	300	240	210	270	78	(W) 6.60 x (H) 3.71 M.	-	32" x 1 screen
The Ritz-Carlton Ballroom 2A	224.9	21.7x10x7.5	330	252	120	120	84	108	63	-	250"	-
The Ritz-Carlton Ballroom 2B	497.4	21.7x22.2x7.5	720	576	300	270	210	270	81	(W) 15.60 x (H) 5.40 M. (W) 6.60 x (H) 3.71 M.	-	32" x 1 screen
The Ritz-Carlton Terrace 1	273.3	5x51.2	150	-	-	-	-	-	-	-	-	-
The Ritz-Carlton Terrace 2	93.1	5x22	50	-	-	-	-	-	-	-	-	-
The Ritz-Carlton Terrace (1+2)	366.42	5x73.2	200	-	-	-	-	-	-	-	-	-

For the banquet setup, all tables used are 1.8 m. round tables and 1.8 x 0.6 m. oblong tables (IBM).

The above-mentioned floor plan is calculated without any stage or platform setup.

The maximum capacity is 1,300 banquet chairs, with 250 Chiavari chairs available as an alternative.



CAPACITY CHART

VENUE	AREA (Sq.m)	DIMENSION WxLxH (m)	RECEPTION	THEATRE	BANQUET	CLASSROOM	CLUSTER	BOARDROOM	U-SHAPE	LED SCREEN SIZE	PROJECTOR SIZE	DIGITAL SIGNAGE SIZE
Gallery 1	123.1	10.6x11.6x4.3	180	128	60	72	42	48	36	110" (TV screen)	110"	32" x 1 screen
Gallery 2	42.3	4.9x9x4.3	-	30	20	18	14	18	21	86" (TV screen)	86"	32" x 1 screen
Gallery 3	42.3	4.9x9x4.3	-	30	20	18	14	18	21	86" (TV screen)	86"	32" x 1 screen
Gallery 4	42.3	4.9x9x4.3	-	30	20	18	14	18	21	86" (TV screen)	86"	32" x 1 screen
Gallery 5	32.5	4.9x7x4.3	-	24	10	12	7	12	15	86" (TV screen)	86"	32" x 1 screen
Ballroom Lounge	50.7	5.5x9.8x3	-	-	-	-	-	-	-	55" (TV screen)	-	-
Gallery Lounge	51.2	7.2x7.9x4	-	-	-	-	-	-	-	65" (TV screen) x 2 screens	-	-
Living Room	58.6	6.4x9.9x5.6	-	-	-	-	-	-	-	-	-	-
Pre-function (Outside Living Room)	78.3	9.7x8.1x6	-	-	-	-	-	-	-	-	-	-
Pre-function 3	438.3	12.37x36.8x6	350	-	-	-	-	-	-	-	-	-
Pre-function 4 (Outside Gallery)	210	6.46x35.6x4.3	100	-	-	-	-	-	-	-	-	-
Lift Lobby / Pre Function	323.7	13.92x24.2x6	-	-	-	-	-	-	-	-	-	-

For the banquet setup, all tables used are 1.8 m. round tables and 1.8 x 0.6 m. oblong tables (IBM).

The above-mentioned floor plan is calculated without any stage or platform setup.

The maximum capacity is 1,300 banquet chairs, with 250 Chiavari chairs available as an alternative.



THE RITZ-CARLTON GRAND BALLROOM



THE RITZ-CARLTON
BANGKOK

MEETINGS AND EVENTS



THE RITZ-CARLTON
BANGKOK

DINING

RESTAURANTS AND BARS

RESTAURANTS & BAR	AREA (Sq.m)	SEATS	OPERATIONS HOUR	CUISINE
Lily's	851	147	Breakfast: 6:30 am - 10:30 am	Main Dining Room with International Cuisine
*including 1 Private Dining Room			Lunch: 12:00 pm - 6:00 pm	and 3 Live Kitchens
(10 seats)			Dinner: 6:00 pm - 10:30 pm	- Western, Seafood, Local
Duet by David Toutain	112	32	Dinner: 6:00 pm - 10:00 pm	Modern French
Pool Bar	-	66	9:00 am - 7:00 pm	International
Caleō	336	78	9:00 am - 12:00 am	Beverage and light snacks, Specialty Bar



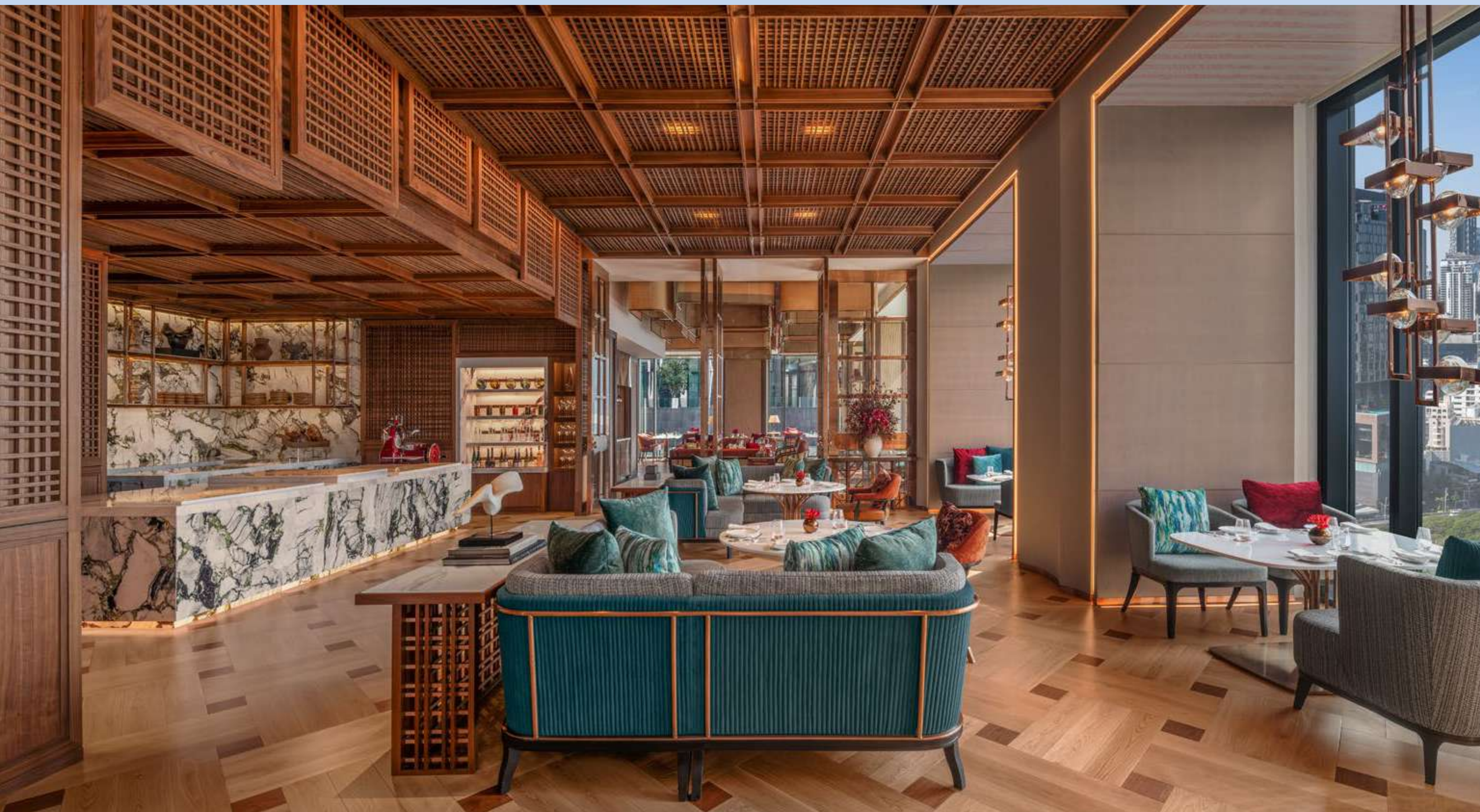
Lily's

LILY'S

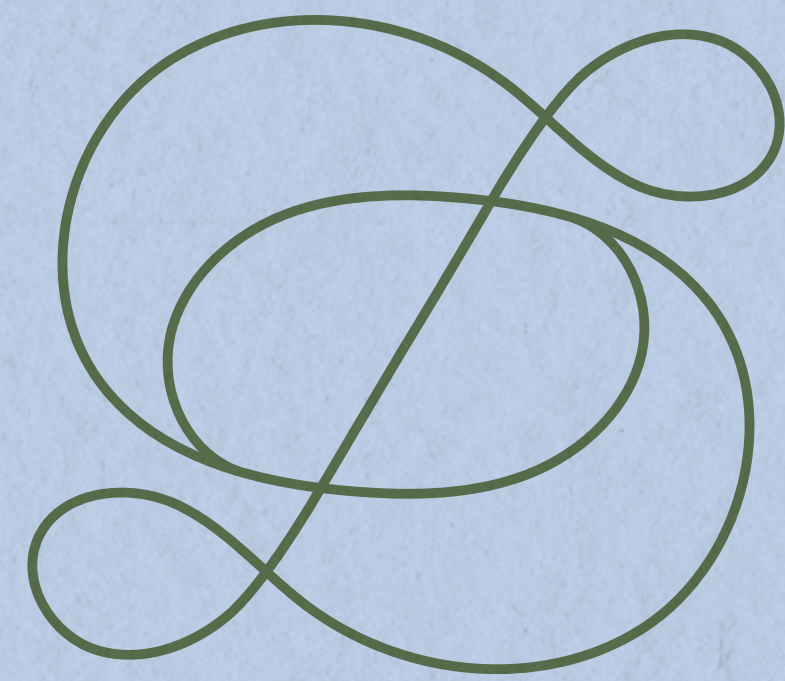


THE RITZ-CARLTON
BANGKOK

LILY'S



THE RITZ-CARLTON
BANGKOK



duet

DUET BY DAVID TOUTAIN



* All images presented are artistic renderings subject to potential modifications, and should not be considered as fully representative of the final space details.



THE RITZ-CARLTON
BANGKOK

DUET BY DAVID TOUTAIN



* All images presented are artistic renderings subject to potential modifications, and should not be considered as fully representative of the final space details.



THE RITZ-CARLTON
BANGKOK

CALEŌ

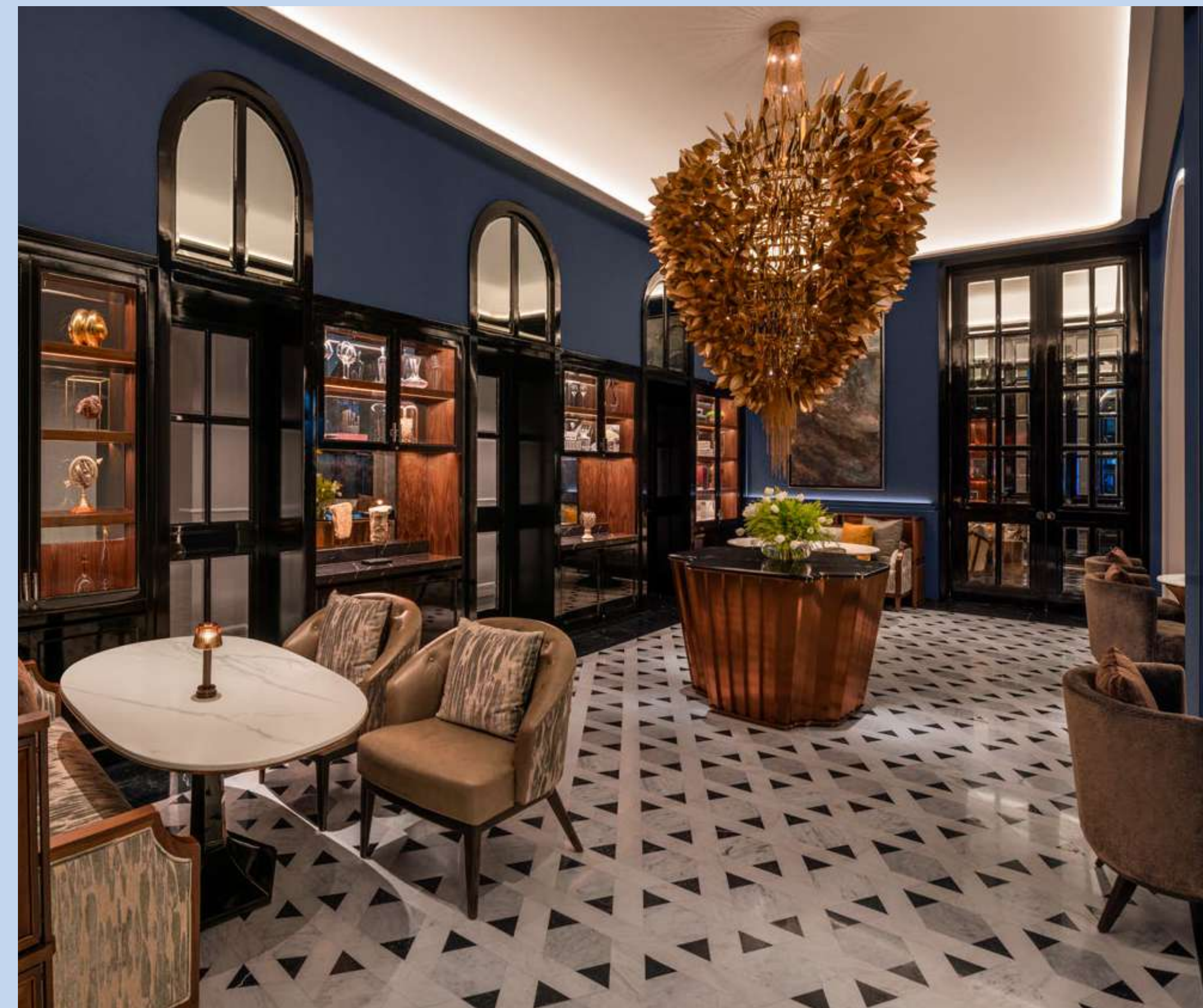
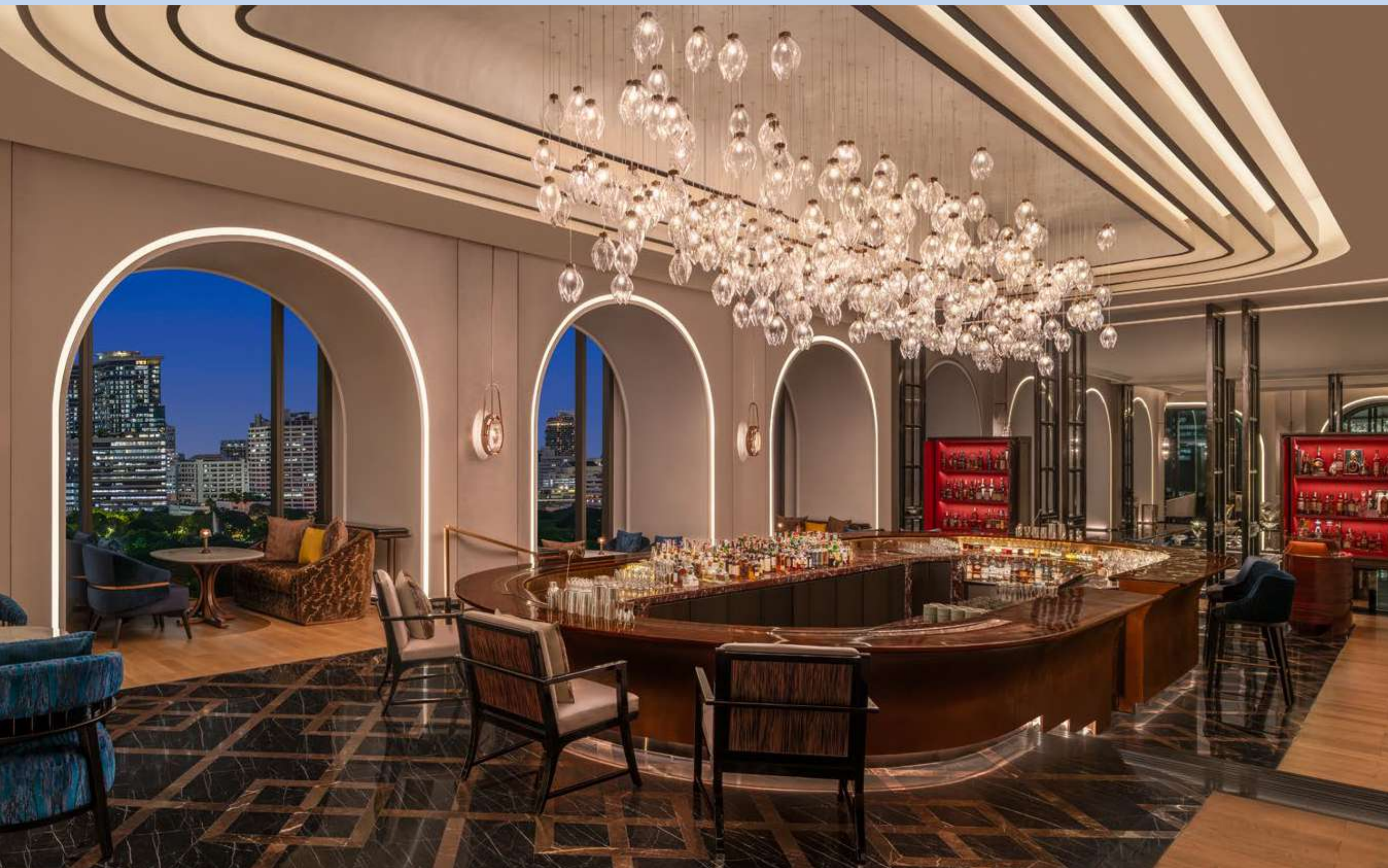


CALEŌ



THE RITZ-CARLTON
BANGKOK

CALEŌ



THE RITZ-CARLTON
BANGKOK

THE RITZ-CARLTON

SPA

THE RITZ-CARLTON SPA

TREATMENT ROOMS	AREA (Sq.m)	HEIGHT
189/1	27.6	2.9
189/2	27.6	2.9
189/3	26.8	2.9
189/4	14.6	2.9
189/5	14.6	2.9
The Ritz-Carlton Spa Suite (2 beds)	57.5	3.2
Relaxation pod	9.8	2.9
Timeless Capsule	9.6	2.8
Pedicure/Manicure	19.7	2.9



* All images presented are artistic renderings subject to potential modifications, and should not be considered as fully representative of the final space details.

THE RITZ-CARLTON SPA

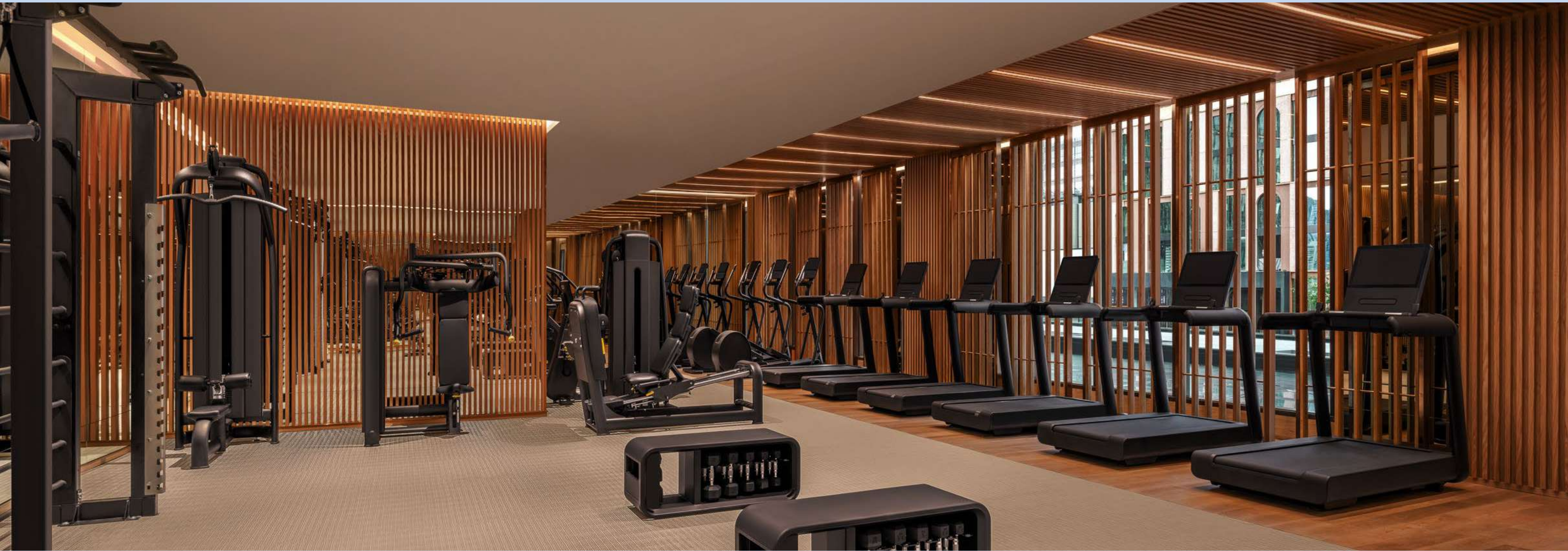


* All images presented are artistic renderings subject to potential modifications, and should not be considered as fully representative of the final space details.



THE RITZ-CARLTON
BANGKOK

FITNESS CENTER



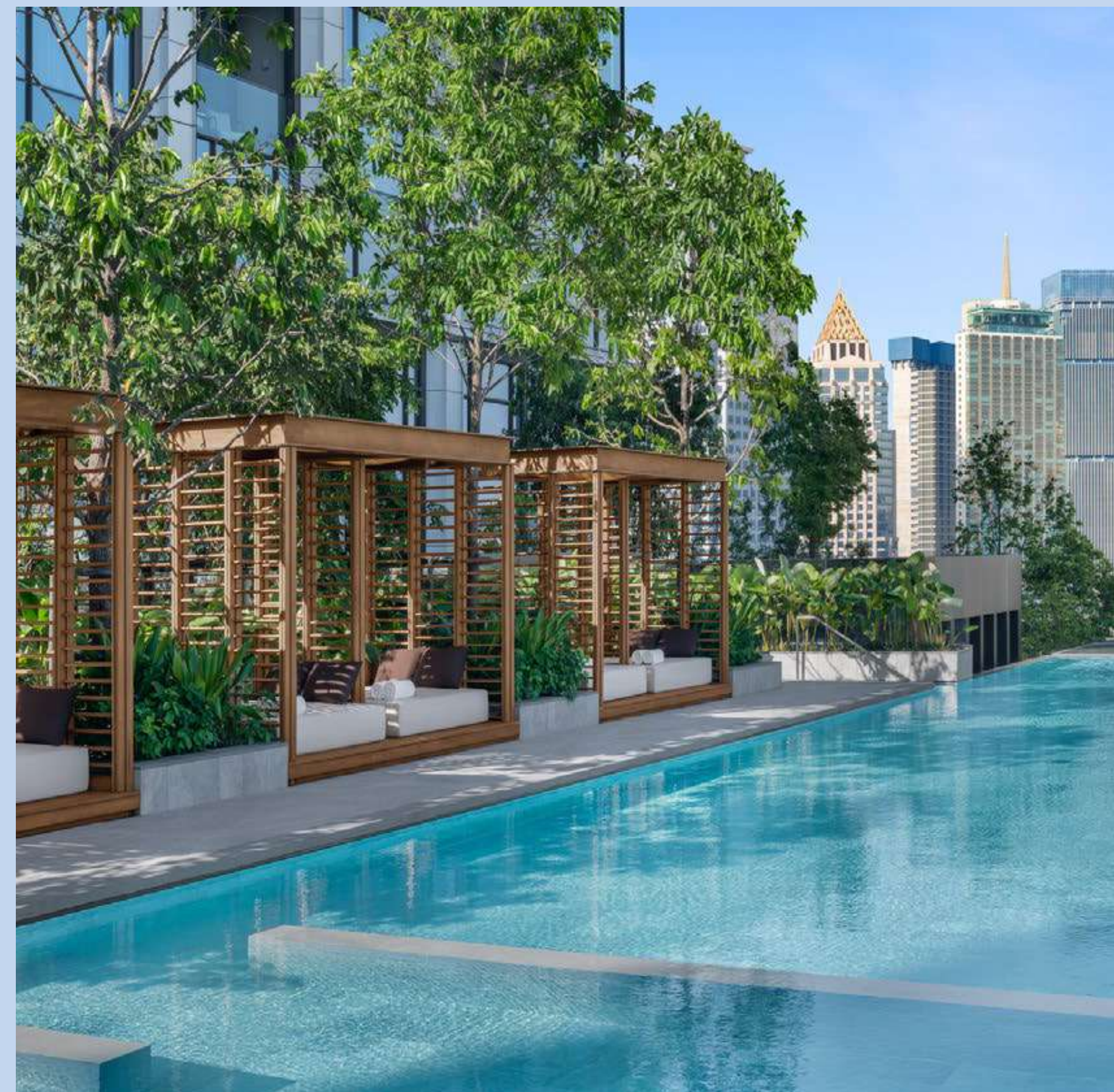
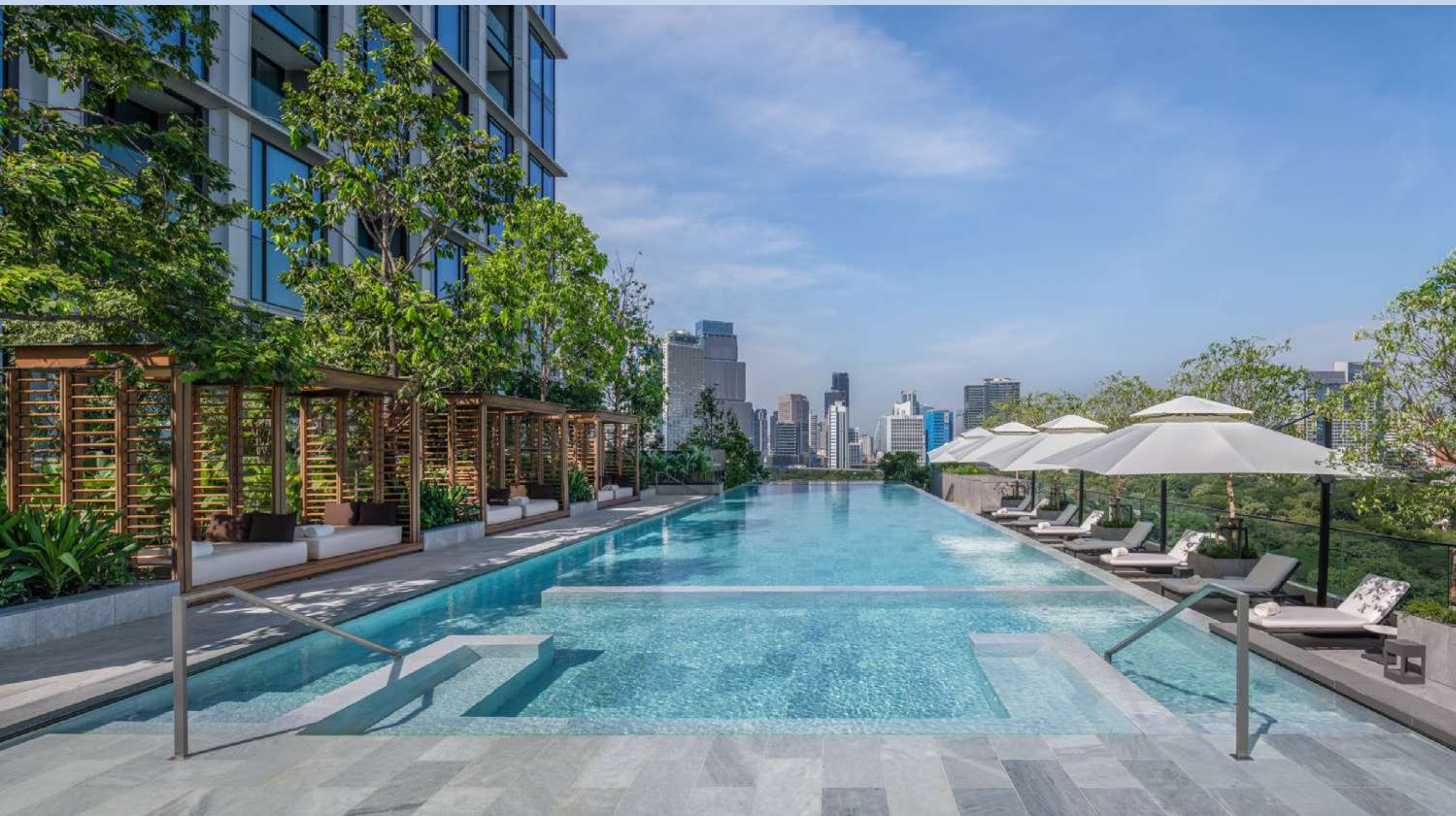
THE RITZ-CARLTON
BANGKOK

SWIMMING POOL

POOL	WIDTH (m)	LENGTH (m)
Lap Pool + Social Pool	8.4	30.5
Reflective Pool	5.6	8.4
Kids (L Shape)	8.6	6



SWIMMING POOL



THE RITZ-CARLTON
BANGKOK

RITZ KIDS

RITZ KIDS



* All images presented are artistic renderings subject to potential modifications, and should not be considered as fully representative of the final space details.



THE RITZ-CARLTON
BANGKOK

ACCOMMODATION

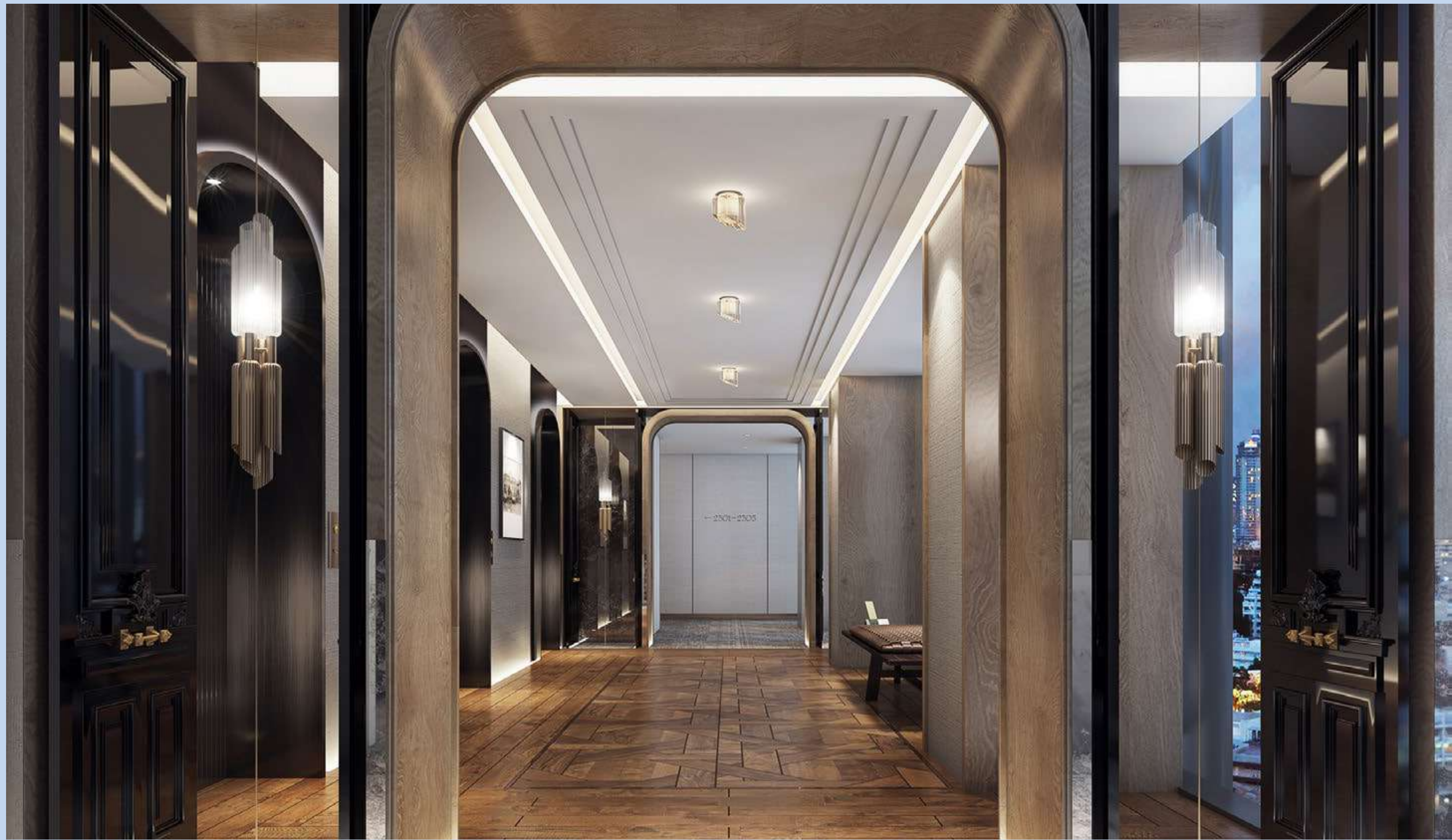
HOTEL ROOM TYPES

ROOM TYPES	AREA (Sq.m)
Deluxe King	50
Deluxe Double	50
Deluxe King, Balcony	50
Deluxe King, Lumpini Park View	50
Deluxe Double, Lumpini Park View	50
Deluxe King, Balcony, Lumpini Park View	50
Club King, Lounge Access	50
Club Double, Lounge Access	50
Club King, Balcony, Lounge Access	50
Club King, Lumpini Park View, Lounge Access	50
Club King, Balcony, Lumpini Park View, Lounge Access	50
Gardenia Suite, Lumpini Park View, Lounge Access	102
Marigold Suite, 1 Balcony, Lumpini Park View, Lounge Access	127
Amaranth Suite, 2 Balconies, Lumpini Park View, Lounge Access	127
The Ritz-Carlton Suite, Lumpini Park View, Lounge Access	389
Total	260 rooms and suites



* All images presented are artistic renderings subject to potential modifications, and should not be considered as fully representative of the final space details.

GUESTROOMS FOYER



* All images presented are artistic renderings subject to potential modifications, and should not be considered as fully representative of the final space details.



THE RITZ-CARLTON
BANGKOK

GUESTROOMS



THE RITZ-CARLTON
BANGKOK

GUESTROOMS



THE RITZ-CARLTON
BANGKOK

SUITE



THE RITZ-CARLTON
BANGKOK

THE RITZ-CARLTON SUITE



* All images presented are artistic renderings subject to potential modifications, and should not be considered as fully representative of the final space details.



THE RITZ-CARLTON
BANGKOK

THE RITZ-CARLTON SUITE



* All images presented are artistic renderings subject to potential modifications, and should not be considered as fully representative of the final space details.



THE RITZ-CARLTON
BANGKOK

CLUB LOUNGE



THE RITZ-CARLTON
BANGKOK

ONE BANGKOK

WORKPLACE

Where Worklife Elevates	One Bangkok Tower
NLA 500,000 sq.m.	One Bangkok Tower 2
	One Bangkok Tower 3
	One Bangkok Tower 4
	One Bangkok Tower 5

HOTELS

The Finest Hospitality, with a combined total of 1,200 keys.

RETAIL

The Rhythmic Experience	Parade
NLA 190,000 sq.m.	The Storeys
	Post 1928

RESIDENCES

Live at The Ultimate	Residential Tower 1
Address	Residential Tower 2
	Residential Tower 3

LIVE ENTERTAINMENT ARENA

World-class stage for myriad of performances	Live Entertainment Arena
---	--------------------------

PROJECT INFORMATION

Land Area:	108 rai (17.3 hectares)
Gross Floor Area:	1.93 million sqm
Parking Spaces:	12,000
Master Architect:	Skidmore, Owings & Merrill (SOM), A49
Investment Value:	THB 120 billion (approx. US\$ 3.5 billion)

ART & CULTURE

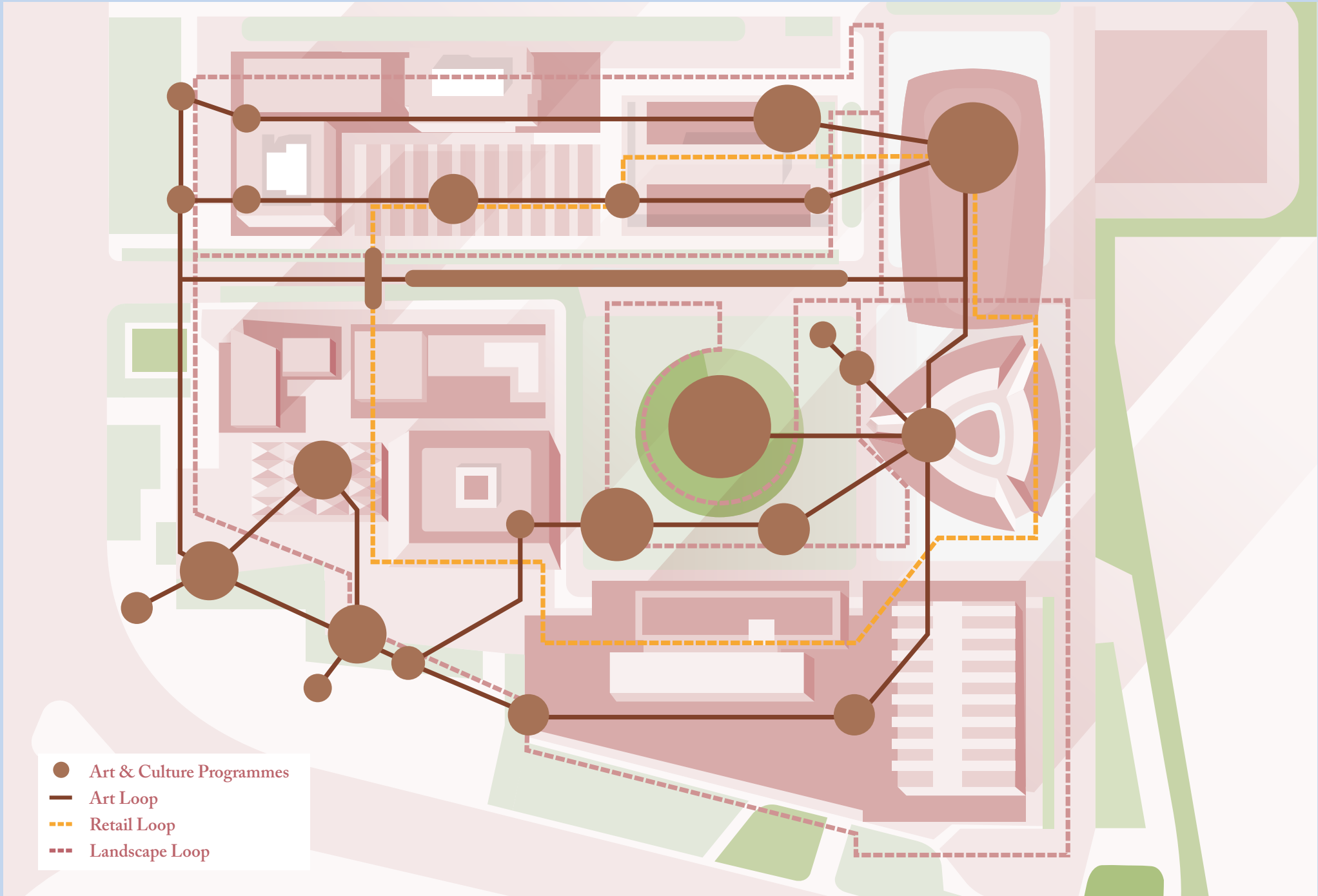
Art & Culture is an intrinsic part of daily life at One Bangkok, making it a must-visit cultural destination and vibrant node for residents, people of the city and tourists, where art is inclusive and accessible to all. Featuring a thoughtfully planned Art Loop, the district will be linked together by multisensory experiences through its state-of-the-art facilities and richness of cultural expressions such as public art, art & learning spaces, as well as performing arts – all complemented by year-round art & cultural events and activities.



* All images presented are artistic renderings subject to potential modifications, and should not be considered as fully representative of the final space details.



ART & CULTURE PROGRAMMES



The Art Loop – Covering more than 160,000 sqm and extending nearly 2km, the pedestrian-friendly Art Loop circles through and around One Bangkok, alongside the Landscape Loop and Retail Loop. Residents and visitors alike will enjoy an enriching sensory experience of art and cultural expression, as the Art Loop provides a unique creative platform to support the office and retail environments and branding.

INSPIRE



One Bangkok’s public art collection will be a significant element in place-making for the district. Curated works from local and international artists will come in various forms – paintings, sculptures, murals and many other types of installations. Each piece aims to inspire, intrigue and engage, encouraging people to socialise and mingle within the public realm.

HERITAGE



Possibly the most unique cultural undertaking within One Bangkok is the reconstruction of Thailand’s first ever radio station and radio mast. Dating back to 1913, the historic station and mast are the reasons why the name “Wireless Road” came to be.

DISCOVER



One Bangkok will feature art spaces throughout the district for visitors to discover, with a premium art gallery being one of the main highlights. Promoting local and international artists of all levels – from the up-and-coming to the well established, various types of spaces in different scales will enable the district to accommodate a wide range of art forms and host world-class art exhibitions and events.

LEARN



The learning centre will appeal to locals and tourists looking for a sensory cultural and educational attraction. It will provide immersive and thematic entertainment where learning and discovery are key elements of the overall experience. The learning centre will also be a potential platform for stakeholder engagement and collaboration with local communities.

PERFORM



The multi-purpose hall will be Bangkok’s leading venue for world-class events, performances and functions. Featuring both global and leading local performers, this premium facility provides outstanding accessibility and convenience, enhancing One Bangkok’s visitor experience and making it a must-visit attraction.

PLAY



From creative playgrounds to water features and other installations, medium to large-scale works of art and integrated architectural structures are strategically placed throughout One Bangkok for families and people of all ages to enjoy. Audiences can also participate in a variety of curated programmes and activities created to be fun, friendly and fulfilling.

CELEBRATE



Artistic and cultural events and activities will enliven the entire district, creating a higher standard of living for One Bangkok’s residents and making it an appealing attraction for visitors and tourists. Spanning a wide range of scale and variety of formats, these events and activities will ensure a vibrantly active district both day and night.

LEGACY



While One Bangkok is designed to meet global standards and deliver futuristic experiences, a key principle behind the district’s planning is its commitment to championing local history and cultural heritage. This is reflected in selected pieces representing the best of Thai craftsmanship and their continuing relevance to contemporary lifestyles.





THE RITZ-CARLTON

BANGKOK